

E&Y will host an exhibition titled "thirty six views".

—

Our collections have been developed since our founding in 1985 by extracting the designers' characters and thoughts, and then editing these elements together to present them as a body of work. When selecting designers to collaborate with and to develop collections, we do not prioritize promotional or functional aspects, but rather focus on the language, glamour, and experimentation of the young designers of each era and society in which they live.

We are pleased to present a total of eight works, four edition pieces and four collection pieces, all of which strongly reflect the designer's qualities. And the new catalog extracts each collection element and pairs it with a visual "painting" in oil, watercolor, or acrylic. Paintings are distantly related to the word "art piece," but they are also connected to our definition of a collection as we often refer to our products as a "art pieces".

In addition, the collection is an extension of the "HORIZONTAL collection" that we presented in 2010 to clarify this thought. It is not about genres or definitions such as mono-ha or minimal art, but rather a kind of "awareness" of the act of consumption of mass-produced objects, and how far the designer's alter ego, which is produced in a dense color palette, can travel.

Moreover, it is the story and philosophy of how E&Y operates as a label, in which even things with a clear use or function may look different.

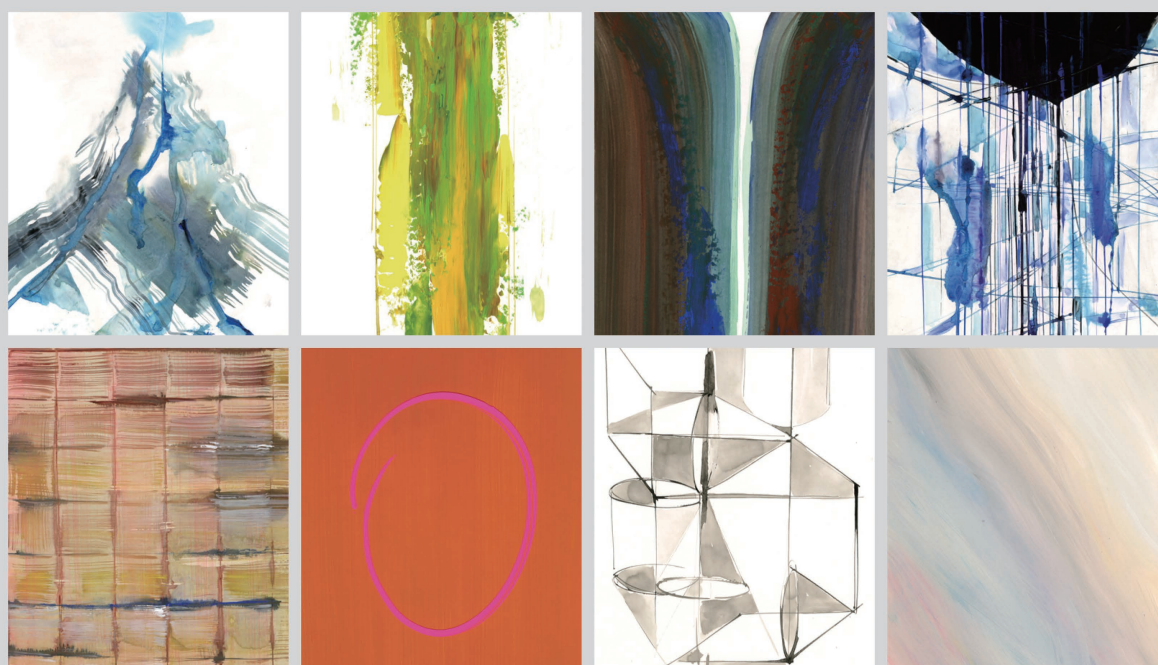
In this mentally difficult time of a pandemic and war, something rarely seen in history, designers around the world are spending their days questioning their own aesthetics, desires, and goals, and wondering what they should present to society. We believe that we can portray a fragment of such strength of designers in this collection.

E&Y CO., LTD.  
Tsuyoshi Matsuzawa

## E&Y Exhibition 「Thirty-six views」

VENUE : AXIS Gallery (Tokyo Roppongi)

OVERVIEW : April 15, 2022 (Friday) - April 24, 2022 (Sunday)



Thirty-six views

E&Y is proud to announce an exhibition titled "Thirty-six views" which will be held at Roppongi Axis Gallery from April 15, (Friday) to 24 (Sunday), 2022.

This exhibition will feature eight works by seven artists from our furniture and limited edition line. In addition, we will also be presenting a catalog of visuals paired with each collection, with elements extracted from the eight works and portrayed through oil and watercolor.

We hope you will enjoy the exhibition.

## OVERVIEW

[ TITLE ]	Thirty-six views
[ PERIOD ]	April 15, 2022 (Friday) - April 24, 2022 (Sunday)
[ OPEN ]	11:00 ~ 19:00 [Last day-18:00]
[ VENUE ]	AXIS Gallery 4th Floor, 5-17-1 Roppongi, Minato-ku, Tokyo 106-0032

## [ DESIGNERS, ARTISTS ]

### Furniture collection line

Julie Richoz  
Julie Tolvanen  
Keisuke Nakamura  
Koichi Futatsumata

### Edition collection line

Daisuke Motogi  
Keisuke Nakamura & Kouki Kumagai  
Koichi Futatsumata  
Yuri Suzuki

## ABOUT

E&Y is a furniture label based in Tokyo. We edit, develop, manufacture and sell design furniture and objects. Our design resource is derived from evolving designers all over the world. The collection includes more than 50 pieces, which have been presented inside and outside of Japan such as Tokyo, Milan, and London. We also work with designers, artists, and architects to develop original products for graphic works, art pieces, and projects. E&Y pieces have been selected as part of the collection of MoMA NY, Design Museum London, Musee des Arts Decoratifs Paris, and the Sweden National Museum.

<https://www.eandy.com>

Furniture collection line

## GINKGO

Julie Richoz

A little wall hook, a romantic wink to the beauty of nature's forms, a memory of encounters with the majestic ginkgo trees of Paris in autumn, a souvenir of a loving stay in Japan.

From a fallen leaf, carefully slid into a book, to a precious gift made of cast iron in the Japanese tradition.



CODE	JR0056
NAME	GINKGO
SIZE	W.75 x D.18.6 x H.123
MATERIAL	Iron
PRICE	¥12,100- ( excluding tax : ¥11,000- )



### Julie Richoz

(1990) is a Swiss-French designer. After graduating from ECAL/University of Art and Design Lausanne (2012), she worked for Pierre Charpin as a project assistant (2013-2015). Since then, she set up her design studio in Paris, where she enjoys with curiosity and sensibility, to develop her own language through objects.

She was awarded of the Grand Prix at Design Parade (2012), Swiss Design Awards (2015 / 2019), Bourse Leenaards (2016) and was finalist of Hublot Design Price (2016).

Since 2017, she teaches industrial design at ECAL/University of Art and Design Lausanne.

<http://www.julierichoz.com>

---



Furniture collection line

## SKETCH VASE

Julie Tolvanen

"I was so amazed to learn that molten glass can be cut using scissors that I decided to sketch some vases and literally cut them out of hot glass. An extra layer of playfulness comes from the interpretation of my sketches by the glass master who cuts the glass and all the lively, unplanned twists and turns that happen while the glass is being worked." Sketch Vases were first exhibited as part of the "Puhdetyö" exhibition during Helsinki Design Week in 2019. In 2020, they were chosen for the "Finnish Glass Lives" exhibition at the Finnish Glass Museum.



CODE	JT0055
NAME	SKETCH VASE
SIZE	$\phi$ .130 x H.300 $\phi$ .175 x H.300
MATERIAL	Glass
COLOR	Pink,Grey, Dark green, Amber
PRICE	¥77,000- ( excluding tax : ¥70,000- )



### Julie Tolvanen

Born and raised in the Pacific Northwest, Julie is an American designer who received a degree in architecture, and then worked as a custom woodworker for 12 years. She taught furniture design, design history, and woodworking courses at universities and craft schools before moving to Finland in 2009 to get her masters degree in furniture design from Aalto University. In 2015, she founded Helsinki-based product design office Studio Tolvanen, together with her husband Mika Tolvanen. Studio Tolvanen designs products ranging from small everyday objects to furniture collections from their studio and workshop on the island of Lauttasaari in Helsinki, Finland. They design for international brands in Europe, North America, and Asia. She has received the Good Design Award from Chicago Athenaeum, the Interior Products award from the Association of Interior Design Editors of Finland, and her glass work has been exhibited at the Finnish Glass Museum.

<http://www.studiotolvanen.com>

Furniture collection line

## INTERACTION\_BLANKET

Keisuke Nakamura

A digital weaving machine that weaves threads based on transmitted data information. This work induces a bug at the borderline between the digital and analog (the technological limit) in the process. The figure originally there in the data, disappears during the weaving process, creating a discordant image.



CODE	KN0053
NAME	INTERACTION_BLANKET
SIZE	W.1,400 × D.1,800
MATERIAL	40% Wool, 60% Acrylic
PRICE	¥55,000- ( excluding tax : ¥50,000- )



### Keisuke Nakamura

Born in 1983. Born in Hamamatsu City, Shizuoka Prefecture. Founded design office "DAIKEI MILLS" in 2011. While working on a variety of design projects, including commercial spaces and public facilities, Nakamura has been consistently exploring the nature of people and space. In 2019, he launched <SKWAT>, a movement to temporarily occupy idle spaces in society and release them to the public. From 2021, he serves as a part-time lecturer at the Department of Environmental Design, at the Tama Art University. <http://daikeimills.com>

Furniture collection line

## ESKER

### Koichi Futatsumata

A stacking chair with a simple form and structure, with a unique smoothing effect applied to the lines and surfaces, creating an integrated form from the frame to the seat.



CODE	KF2050
NAME	ESKER
SIZE	W.450 × D.468 × H.789 / SH.465 *stackable
MATERIAL	Frame : Beech, Seat : Urethane foam + Fabric
COLOR	Natural, Black, Gray, Red
PRICE	F1 / ¥96,800- ( excluding tax : ¥88,000- )
	F2 / ¥107,800- ( excluding tax : ¥98,000- )
	F3 / ¥118,000- ( excluding tax : ¥108,000- )



### Koichi Futatsumata

Designer. Futatsumata is the representative director of "CASE-REAL" focusing on spacial design, and "KOICHI FUTATSUMATA STUDIO" which specializes in product design. He is based in Fukuoka and Tokyo working internationally with variety of works including architectures, interiors, furnitures and products. The product works are "HAMMOCK(E&Y)" , "in the sky (E&Y)" , "Cutlery for valerie\_objects(valerie\_objects)" , "Kiulu Bench(Artek)" and others. Also, his work "22" have been added to the permanent collection at San Francisco Museum of Modern Art. The visiting professor of Kobe Design University from 2021.

<http://www.casereal.com>

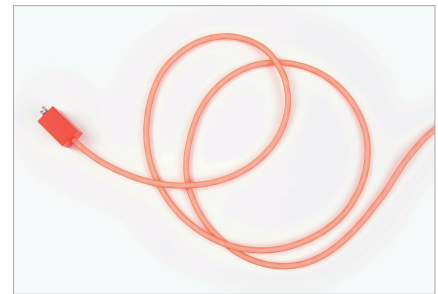
<http://www.futatsumata.com>

Edition collection line

## STOP MAKING SENSE

Daisuke Motogi

By changing your perspective, you will see the world in a completely different way. Such a perspective shift is called “reframing” . Derived from cognitive psychology and social psychology, it is also a term that is often seen in business and lifestyle books. Is that a stain on the wall, or is it a pattern? By changing only your perspective, you can transform the meaning into a positive one with a minimum of effort.



CODE		DM0054
NAME		STOP MAKING SENSE
SIZE		W.500 × D.61 × H.620 (cord : 10m)
MATERIAL		Frame : Aluminum
PRICE		¥218,130- ( excluding tax : ¥198,300- ) *Edition 5



### Daisuke Motogi

Born in Saitama, Japan in 1981. After graduating from Musashino Art University in 2004, he joined to Schemata Architects. In 2010, he established his own architectural and design practice DDAA. In 2019, he established R&D organization DDAA LAB with Mistletoe Inc.; a Collective Impact

Community that advocates a new style of business through startup support, to solve social challenges. In 2021, he participated in the Japan Pavilion at the 17th International Architecture Exhibition - Venice Biennale.

<https://dskmtg.com>

Edition collection line

## INTERACTION\_CHAIR

Keisuke Nakamura & Kouki Kumagai

The manufacturing process unique to wood furniture is made visible to the utmost extreme, which itself becomes a new construction method and gives birth to a new form. The accumulation of tolerances creates a new perspective.



CODE	KK2051
NAME	INTERACTION_CHAIR
SIZE	W.470 × D.560 × H.510 / SH.380
MATERIAL	Western hemlock
PRICE	¥660,000- ( excluding tax : ¥600,000- ) *Edition 5



### Keisuke Nakamura

Born in 1983. Born in Hamamatsu City, Shizuoka Prefecture. Founded design office “DAIKEI MILLS” in 2011. While working on a variety of design projects, including commercial spaces and public facilities, Nakamura has been consistently exploring the nature of people and space. In 2019, he launched <SKWAT>, a movement to temporarily occupy idle spaces in society and release them to the public. From 2021, he serves as a part-time lecturer at the Department of Environmental Design, at the Tama Art University.

<http://daikeimills.com>



### Kouki Kumagai

Born in Hokkaido, Japan in 1992.

After graduating from Musashino Art University, he joined to design office “DAIKEI MILLS”. In 2010, he will establish his own architectural studio.



Edition collection line

**No8**

**Koichi Futatsumata**

An object with a mathematical form, which serves as a device to place planters.



CODE	KF4012
NAME	<b>No8</b>
SIZE	W.658 × D.350 × H.550
MATERIAL	Stainless steel
PRICE	¥440,000- ( excluding tax : ¥400,000- ) *Edition 5



**Koichi Futatsumata**

Designer. Futatsumata is the representative director of "CASE-REAL" focusing on spacial design, and "KOICHI FUTATSUMATA STUDIO" which specializes in product design. He is based in Fukuoka and Tokyo working internationally with variety of works including architectures, interiors, furnitures and products. The product works are "HAMMOCK(E&Y)" , "in the sky (E&Y)" , "Cutlery for valerie\_objects(valerie\_objects)" , "Kiulu Bench(Artek)" and others. Also, his work "22" have been added to the permanent collection at San Francisco Museum of Modern Art. The visiting professor of Kobe Design University from 2021.

<http://www.casereal.com>

<http://www.futatsumata.com>

Edition collection line

# THE AMBIENT MACHINE

Yuri Suzuki

In the midst of this pandemic situation, we have been spending more time in a single living environment than we have ever experienced before. It was a great opportunity to pay attention to the sounds around us. Noise coming in from the outside, sounds generated from inside the house, echoes. The Ambient Machine provides us with a variety of sound effects. For example, the masking of sound by white noise, gives rhythm and relief to our life by giving it a pattern. Then, there is the function as background music, ambient music as defined by Brian Eno, starting with Erik Satie. By toggling the switch, you can create background music that suits your mood. Enjoy the luxurious experience created by sound.



CODE | YS0057  
NAME | THE AMBIENT MACHINE  
SIZE | W.264 × D.135 × H.177  
MATERIAL | Walnut, PCB  
PRICE | ¥110,000- ( excluding tax : ¥100,000- ) \*Edition 20



## Yuri Suzuki

Born in Tokyo in 1980. Between 1999 and 2005 he worked for Japanese art unit Maywa Denki, where he developed a strong interest in music and technology. In 2005 he moved to London to study at the Royal College of Art. His work raises questions of the relation between sound and people and how music and sound affect people's mind. The art pieces and installations have been shown in exhibitions all around the world. In 2013, Suzuki was appointed as platform tutor at Design Products department in Royal College of Art and member of New Radiophonic Workshop. Following 2014, Museum of Modern Art New York acquired his work OTOTO the DIY musical to their permanent collection. In 2018 Yuri Suzuki was appointed as the latest partner at Pentagram leading his team of designers, composers and developers. Yuri and his team are based at Pentagram's London studio with an international client base, who are looking to push the boundaries of design, technology and sound crossing the field of low and high tech.  
<https://yurisuzuki.com>



## CONTACT US

### General

E&Y CO.,LTD.

- WEB <https://www.eandy.com>
- TEL 03-3481-5518

### Press

HOW INC.

- MAIL [pressrelease@how-pr.co.jp](mailto:pressrelease@how-pr.co.jp)
- TEL 03-5414-6405